

BELLINGHAM

RELOCATION GUIDE

EXPLORE LIVING
IN WHATCOM
COUNTY

NEIGHBORHOODS
RECREATION
ANNUAL EVENTS



WINDERMERE REAL ESTATE/WHATCOM, INC.

Photo by Bellingham Media Group



03

By the Numbers

05

Recreation

07

Neighborhoods

19

Eat + Drink

21

Outdoor Activities

23

Annual Events

Welcome to Bellingham

From Ben Tucker

Welcome to the city of subdued excitement! I'm eager to show you the beauty of this area. Relocating to a new area can be challenging especially as it may be in combination with other big life events like changes in your career, establishing a family, or retiring. Maybe you want to experience recreational and educational opportunities in a new environment. Whichever path leads you to Bellingham, I can assure you that I'm glad to have you here!

Bellingham is consistently ranked as one of the

best medium sized cities in the country to call home. Surrounded by lush greenery, lakes, the bay, and mountains, residents of all ages appreciate the natural beauty and endless opportunities that this wonderful city provides.

With this guide, I'll give you a few tools and provide insight to make relocating here feel just like coming home. Please don't hesitate to reach out to me for help - I'm here to be "*All in, for You.*"

Ben Tucker - Windermere Real Estate / Whatcom, Inc.

Serving Whatcom County since 2016



What does it mean for me to be *all in, for you*? It means I love what I do, and it comes across in all that I do. It means I sweat the details, so my clients don't have to. It's a belief in acting beyond myself and caring deeply about the communities I serve. It's what sets me, and Windermere, apart from all the rest.

Windermere Whatcom has been serving our community since 1995. Our five conveniently located offices are strategically placed in Bellingham, Fairhaven, Lynden,



Ferndale, and Birch Bay, enabling us to easily connect with our clients and amplify public exposure.

I have a deep love for the Pacific Northwest, and I am eager to help you uncover the region's natural splendor and assist you in finding the perfect property that will allow you to enjoy the best that the area has to offer.

Bellingham

By the Numbers

Bellingham combines local industry, the spirit of a college town, and a robust lifestyle dating back to 1852

[Come along for the ride as we dive into the beauty of Bellingham.](#)

The City of Bellingham is at the center of a uniquely picturesque area offering a rich variety of recreational, cultural, educational and economic activities. The waters of the Pacific offer opportunities for whale watching, cruising to Friday Harbor or visiting the Canadian city of Victoria. To the east, Mt. Baker beckons skiers and snowboarders to its slopes. The city itself is alive with vibrant theater, historical museums, fine dining and a diverse community of cultures. If you've been looking for a place that provides a strong sense of community, an abundance of outdoor recreational activities, job opportunities or educational enrichment programs, then look no further.

In 1903, four towns – Fairhaven, Whatcom, Sehome, and Bellingham – merged to create the Bellingham we know today. Bellingham's historic character is remarkably well-preserved, with a large number of historic buildings downtown, in Fairhaven's Historic District, and in adjacent neighborhoods.

In Washington, Whatcom County ranks #12 in terms of area, with about 2107 square miles of land and another 397 square miles of water.

By population, we rank #9 with about 241,400 residents. Whatcom County is popular among young professionals, families and retired individuals, who all keep the area well-populated and thriving.

HISTORIC HOMELAND

Bellingham is the homeland of Coast Salish peoples of the Lummi (or Lhaq'temish) People and neighboring tribes. People of Lummi ancestry continue to live in and around Bellingham Bay, particularly on the nearby Lummi Nation reservation.

91,482

Residents living in Bellingham
(2020 census)

27.08

Square miles of abundant nature,
outdoor adventure, and sweeping
scenery

\$65,420

Median Household Income
(2020 census)

19 mins
Mean
Work
Commute

29 mins
To
Canadian
Border

1 hr
33 mins
To
Seattle



Whatcom County cities have perennially been recognized by the national media as some of the best places to live in America.



The Central Business District, Downtown | View to the Southwest of Bellingham

Business

Number of Businesses: 8,104

Top employment industries:

Healthcare, Government,
Education, Retail,
Manufacturing, Information
technologies, Construction,
Agriculture, Forestry + Fishing

Housing

Number of Households: 38,680

Persons Per Household: 2.23

Per Capita Income: \$32,419

Owner Occupied Housing: 46%

Multi-family Housing: 48.9%

Tenant Occupied Housing: 54%

Homeowners with a Mortgage: 67.4%

Climate

Sunny days per year: 157

Hottest month: August (73 °F avg)

Coldest Month: December (35 °F avg)

Wettest Month: November (3.86" avg)

Windiest Month: January (7 mph avg)

Annual Precipitation: 20.91" (per year)

Recreation

The best place to play year-round - Bellingham is best known for its outdoor recreation and world-class brews.

Bellingham is well known as a city with vast recreational opportunities. Rain or shine, enjoying the great outdoors is part of our DNA. Galbraith Mountain features some of the best mountain biking trails in the entire country. Mt. Baker is an epic ski & snowboard destination that sees visitors from all over the world. Our mountain ranges boast some of the best hiking trails in the United States. Beautiful lakes full of fish? We got 'em.

Whatever your outdoor interests may be, Bellingham won't

disappoint. As an added bonus, you don't need to pack all your gear for these initial visits. At the Bellingham REI, you can rent mountain bikes, hiking & camping gear, paddle boards and kayaks, skis and snowboards, rock climbing gear, snowshoes - you name it. Groups online are always updated with activity and event plans, weather predictions, suggestions and tips. Look to our friendly local community to find your niche!



EAT + DRINK

Bellingham is a foodie's paradise. Many restaurants source their ingredients from farms and the waters right in Whatcom County. While this helps support local farmers and food producers, it also makes for the most delicious, fresh food!

Bellingham is also well known for its many local breweries and plenty of bars.

Most of these breweries are located within a couple miles of each other in the downtown core. With most allowing all ages and some even pets, there is an establishment for everyone!



SWIM

Situated on the Salish Sea, Whatcom County is home to Chuckanut Bay, Bellingham Bay, Lummi Island, Lummi Bay, Cherry Point, Birch Bay, Drayton Harbor and Point Roberts. Besides the extensive coastline, there are many lakes and rivers to explore and play in throughout the county. Whale watching, water sports and a casual swim are just a few of the activities that locals and visitors alike love.



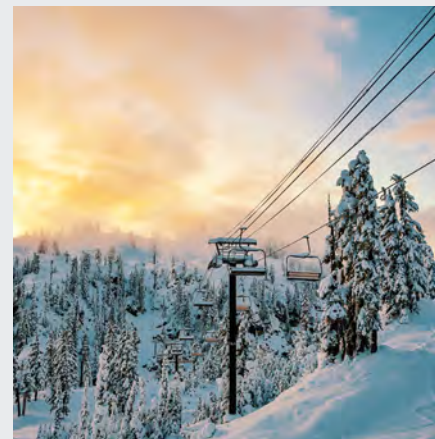
SKI

The famous Mt. Baker Ski area is the perfect setting for all of your snow activities, events and sports during the winter season. With a variety of terrain, 8 different chairlifts, 2 lodges, lessons and rentals available, Mt Baker offers an unmatched experience! Not only this, but there are snowshoe/cross country trails, snowmobile areas and sledding opportunities.



HIKE

The hundreds of trails throughout the Bellingham area offer year-round hiking opportunities. Both water and mountain views are plentiful from the extensive system of hiking trails through the city and surrounding nature. Almost all trails are easily accessible and available for visitors of all abilities.



ART

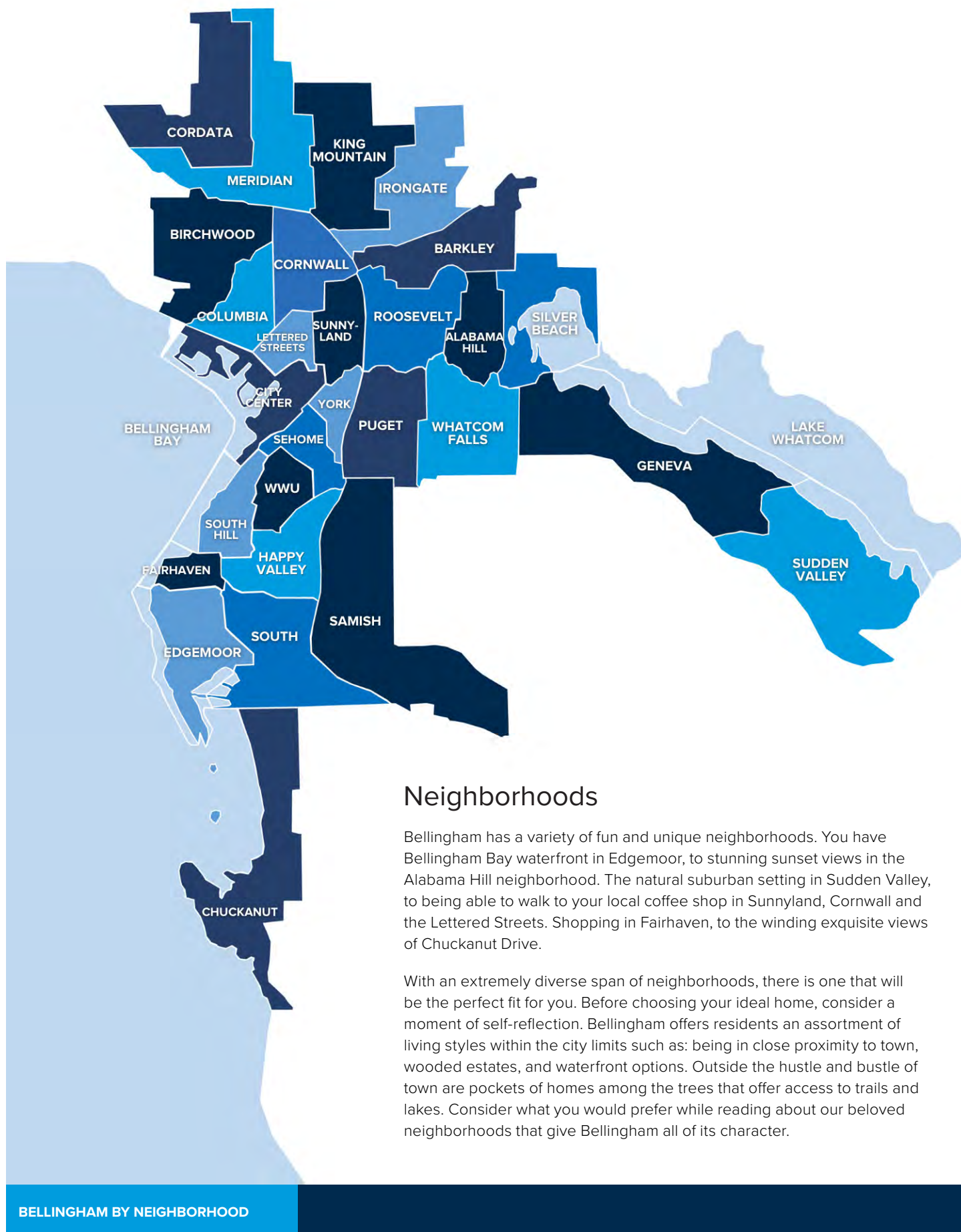
Bellingham's vibrant art community offers an array of exhibits, galleries and collections year-round. The free Culture Crawl Pass offers great ideas on where to view amazing creations while listing all events throughout the year to attend.

FISH

Lakes, rivers, and oceans in Whatcom County make Bellingham the perfect fishing spot, with options for any fisherman! Licenses can easily be purchased through local shops or online to match the season or type of fishing that you enjoy doing.

BIKE

As one of the most popular activities in Bellingham, Whatcom County offers endless trails, track, county roads and city streets to bike on. From mountain biking to a leisurely ride, there is a trail for every experience.



Neighborhoods

Bellingham has a variety of fun and unique neighborhoods. You have Bellingham Bay waterfront in Edgemoor, to stunning sunset views in the Alabama Hill neighborhood. The natural suburban setting in Sudden Valley, to being able to walk to your local coffee shop in Sunnyland, Cornwall and the Lettered Streets. Shopping in Fairhaven, to the winding exquisite views of Chuckanut Drive.

With an extremely diverse span of neighborhoods, there is one that will be the perfect fit for you. Before choosing your ideal home, consider a moment of self-reflection. Bellingham offers residents an assortment of living styles within the city limits such as: being in close proximity to town, wooded estates, and waterfront options. Outside the hustle and bustle of town are pockets of homes among the trees that offer access to trails and lakes. Consider what you would prefer while reading about our beloved neighborhoods that give Bellingham all of its character.



Chuckanut

Happy Valley Elementary School
Fairhaven Middle School
Sehome High School

If you love the idea of being “out of town” with close access to saltwater beaches, miles of trails, and higher-end single family homes, then Chuckanut may be your dream come true!

Living here you will have close access to such trails as Oyster Dome, Fragrance Lake, Pine & Cedar Lakes, the Interurban Trail, as well as Clayton Beach and of course waterfront Larrabee State Park – Washington’s oldest State Park.

All residents of the Chuckanut neighborhood are eligible to join the Chuckanut Beach Association, a collection of 5 non-public-access beaches on Chuckanut Bay where you can picnic, beach-comb, launch kayaks or swim.

For some of the area’s finest dining, you can stay right in the neighborhood and visit the Oyster Bar or Chuckanut Manor, both of which are highly regarded for their seafood and other fine dishes.

Take a cruise along the notable Chuckanut Drive to see if this is your future landing spot.

Chuckanut Drive is Washington State’s original scenic byway. This is a favorite and historic entry into Whatcom County.



Edgemoor

Single Family Units: 874
Multifamily Units: 16
Total Population: 2,135

Lowell Elementary School
Fairhaven Middle School
Sehome High School

With large lots, mature landscaping, and quiet residential character, the Edgemoor neighborhood can be a special place to call home. The area has magnificent views of Bellingham Bay and the San

Juan Islands. The entire southern one-third of the Edgemoor Neighborhood features some of the most magnificent property in the city.

Another Edgemoor asset is Fairhaven Middle School, which occupies about 13 acres in the northeast part of the neighborhood. Nearby Fairhaven Park provides a wide range of recreational opportunities to neighborhood residents. You can also walk or bike into the historic town of Fairhaven where you can enjoy a multitude of small shops and restaurants.



South

Single Family Units: 343
Multifamily Units: 391
Total Population: 1,954

At the southern edge of the city west of I-5, the South Neighborhood is home to over 1,900 Bellingham residents. The large areas of undeveloped property and significant natural features help define the

Happy Valley Elementary School
Fairhaven Middle School
Sehome High School

character of the neighborhood, as well as the variety in home sizes and architectural details. There are small residential pockets, primarily in the more developable parts of the neighborhood.



Samish

Single Family Units: 1,367
Multifamily Units: 323
Total Population: 3,940

Wade King Elementary
Fairhaven Middle School
Sehome High School

Home to approximately 3,900 people, the Samish Neighborhood is a relaxed place to live with abundant open space and wooded areas. Modest older homes mix with the newly developed areas on the eastern slopes, and many of them are well kept and located on large lots.

This is where you can find Lake Padden, the third largest lake in Whatcom County, and Lake Padden Park. This is conveniently located and features a playground, picnic

shelters, softball fields, non-motorized boating, fishing, miles of trails, and an 18 hole golf course!

Residents of the Samish Neighborhood enjoy scenic views, the wooded backdrop, plant and animal life, and the recreational opportunities afforded by the land.

Happy Valley

Single Family Units: 732 Happy Valley Elementary School
Multifamily Units: 2,889 Fairhaven Middle School
Total Population: 7,027 Sehome High School

Happy Valley continues to grow in popularity for students of Western Washington University with its close proximity to the campus. The highest densities of apartments have been built in the north end of the neighborhood, closest to WWU.

However, much of the southern section of the neighborhood still consists of single family residences that enjoy pockets of quiet,



undeveloped areas where owls, deer, and great blue heron can be spotted.

The largest public natural area in Happy Valley is Connelly Creek Nature Area established to preserve Connelly Creek, its associated wetlands and the wildlife habitat they provide. Residents also enjoy Happy Valley Park, a small, active neighborhood park with a playground, picnic shelter and open field.

Fairhaven

Single Family Units: 732
Multifamily Units: 2,889
Total Population: 7,027

Happy Valley / Lowell Elementary School
Fairhaven Middle School
Sehome High School

Fairhaven holds a lot of historic value as it was one of three towns on Bellingham Bay that merged to become the City of Bellingham in 1904. Fairhaven's residents live in single-family homes, apartment buildings, and condominium complexes within walking distance of the downtown shops and other modes of transportation like the Alaska Ferry Terminal, Amtrak Station and Greyhound bus.

In the center of this area lies the Fairhaven Village Green which hosts activities like concerts, movies, bocce ball, and farmer's market, while folks can take in the Fairhaven ambience. The 2-mile South Bay Trail connects to central Bellingham, Fairhaven Park and the Chuckanut Mountains. With its great food, boutique shopping, amazing art scene, and eclectic feel, Historic Fairhaven is quite charming!

South Hill

Single Family Units: 950
Multifamily Units: 732
Total Population: 3,545

Lowell Elementary School
Fairhaven Middle School
Sehome High School

South Hill is a unique neighborhood found on Bellingham Bay with more than 3,000 residents. South Hill has a good mixture of single family homes, apartments, and condominiums. Many of the homes in this area were built in the early 1900's and boast excellent views of Bellingham Bay, the San Juan Islands, and the Canadian coastal range mountains.

This neighborhood provides a perfect opportunity for strolling Boulevard Park on

Bellingham Bay and stopping at Taylor Street Dock to view harbor activity.

Nearby, you can find Lowell Elementary School and The Chrysalis Inn & Spa. Stop in to relax and check out the hotel, along with their restaurant Keenan's at the Pier that serves fresh Pacific Northwestern cuisine.

Although attached garages and flat lots may be sparse, South Hill offers a bountiful community and surrounding environment.

WWU

Total Population: 4,201

The Western Washington University Neighborhood contains lush open space with more than 70 species of trees and spectacular views overlooking Bellingham Bay.

Serving more than 16,000 students, WWU is regarded as one of the top comprehensive regional universities in the

west. Approximately 4,000 students live on campus in the University's Residence Halls, with plenty of off campus student housing opportunities.

Bellingham citizens have access to Western's facilities like the nationally acclaimed outdoor sculpture collection, award-winning theatre and music performances, and nationally-ranked NCAA Division II Athletics.



Sehome

Single Family Units: 404

Multifamily Units: 1,797

Total Population: 4,310

Happy Valley Elementary School

Fairhaven Elementary School

Sehome High School

Being one of the city's older and more centrally located residential neighborhoods, approximately 90 percent of this neighborhood is developed. Over 3,500 people reside in the neighborhood in a mix of single and multi-family structures. There are many large, architecturally intricate houses of historical value in the older residential part of the neighborhood, along with a large number of college rentals.

Being situated on Sehome Hill, much of this neighborhood has excellent views of Bellingham to the north, over Bellingham Bay, or toward Mount Baker to the east. The 165-acre Sehome Hill Arboretum is a prominent open space area that defines the southern and western borders of the neighborhood. As an added bonus, it is walkable to everything that downtown Bellingham has to offer.

Located in Sehome are Pine & Cedar Park and Laurel Park. Sehome Village offers a Haggen supermarket, REI, restaurants, offices and shops.



City Center

Single Family Units: 404

Multifamily Units: 1,797

Total Population: 4,310

Parkview Elementary School

Whatcom Middle School

Bellingham High School

The City Center is a collection of smaller "neighborhoods," each of which has distinct features that reflect historical land uses, topography and geographic location. Here you can find the WTA Bus Station along with endless places to eat, drink and interact with the community. Visit sites like Squalicum Harbor, Zuanich Park, the bike pump track, Hotel Bellwether and the Bellingham Yacht Club.



York

Single Family Units: 404
Multifamily Units: 1,797
Total Population: 4,310

Lowell Elementary School
Fairhaven Middle School
Sehome High School

This is one of the city's oldest neighborhoods, with many large, well-built craftsman style homes on sandstone foundations. Although houses were built as early as 1889, and as late as 1970, the majority of homes were built between 1890 and 1910, with many examples of fine Victorian architecture throughout. The York Neighborhood has historically been recognized as Bellingham's earliest middle-class neighborhoods.

Despite the presence of several larger homes, the majority of the houses are small, and are built on smaller lots, creating a rather high population density and fewer open spaces. The community has made the best of it and established Rock Hill Park that sits at the end of Iron Street, which has a small playground and half-court basketball. All of the amenities of downtown are just a few blocks away!

Puget

Single Family Units: 404
Multifamily Units: 1,797
Total Population: 4,310

Carl Cozier / Wade King Elementary
Fairhaven / Kulshan Middle School
Sehome High School

The Puget Neighborhood features single family homes and multi-family developments that are well cared for and have excellent Bellingham Bay or Canadian Cascade views. They're also near the commercial district along Lakeway Drive that is home to Fred Meyer, Whole Foods, and a slew of restaurants and activity centers. Puget is biking distance to downtown, and walking distance to shopping, trails, and Whatcom Falls.

Residents have access to Civic Athletic Complex, the most active park and recreation facility in the city. This complex includes the Arne Hanna Aquatic Center, Civic Stadium, Joe Martin baseball field, passive wetland areas, the Sportsplex indoor ice and soccer facility, Frank Geri softball fields, walking trails, a skate park, bike jump park, and undeveloped forest land.

Whatcom Falls

Single Family Units: 1,050
Multifamily Units: 44
Total Population: 2,631

Roosevelt Elementary School
Kulshan Middle School
Squalicum / Bellingham High School

Home to more than 2,000 Bellingham residents, the Whatcom Falls neighborhood is located at the eastern edge of the city. Large tracts of undeveloped land remain at the southern and eastern portions of the neighborhood, but most of the development in the neighborhood is residential in nature, typically at about four units per acre density.

The Bayview Cemetery, Whatcom Falls Park, and Kulshan Middle School sites make up the publicly owned portion of the neighborhood and provides great recreational opportunities. Whatcom Falls Park has 3 waterfalls to enjoy, with a great view of the main falls from an old sandstone bridge. Bloedel-Donovan Park is quite popular too, along with the 60 acres of open space called "Lookout Mountain" that is a beautiful spot for hiking and biking.





Geneva

Geneva Elementary School
Kulshan Middle School
Bellingham High School

Total Population: 2,687

Located on Lake Whatcom's north-western shore, Geneva is bordered by Whatcom Falls to the west, Lookout and Galbraith Mountains with their endless miles of hiking and biking trails to the south, and Silver Beach to the north.

From 20th century Craftsman to NW Contemporary, to waterfront cottages and multi-million dollar homes, Geneva has a wide range of living styles. With lot sizes generally larger than you'll find in town and with plenty of mature trees lining the quiet side streets, it keeps a very peaceful atmosphere.

There are two schools in Geneva: the fully public Geneva Elementary and private Whatcom Hills Waldorf School. Western Geneva homes are served by Carl Cozier Elementary, right across the street from Whole Foods.

Residents and visitors love taking advantage of Geneva's lakeside locale and numerous nature preserves. Tucked back in the trees is Euclid Park, the public access to Lake Whatcom from Geneva. A trail system runs through the woods and the beach is a nice place to play or relax.

Sudden Valley

Geneva Elementary School
Kulshan Middle School
Bellingham High School

Total Population: 7,407

20 minutes from downtown Bellingham is Sudden Valley. There are over 3,000 dues paying lots in Sudden Valley, which include condos, single family homes, and empty lots. This makes Sudden Valley one of the largest HOAs in the nation.

Sudden Valley is situated on the southwest shore of Lake Whatcom and was originally developed in the '60s and '70s primarily as a vacation home destination. It is now made up of mostly owner-occupied homes and condos. You can find more affordable "starter homes", larger homes with many bedrooms and attached garages, and even luxurious waterfront and/or golf course-front homes. This area is semi-private, surrounded by abundant wildlife, and has a small community feel.

It just so happens to be an outdoor lover's paradise! There are miles of hiking trails, parks and playgrounds, beaches, dog parks, tennis and basketball courts. There is an 18-hole golf course designed by Ted Robinson, a marina with in-water and on-land boat storage options, kayak and canoe racks, and an Olympic-sized swimming pool open in the warmer months. To the west is Galbraith Mountain, which has become one of the most renowned mountain biking and hiking trail destinations in the PNW.

Lake Whatcom is the drinking water source for approximately 85,000 residents in the city of Bellingham as well as Whatcom County.

Roosevelt

Single Family Units: 1,243
Multifamily Units: 1,728
Total Population: 6,330

Roosevelt Elementary School
Kulshan Middle School
Squalicum High School

The Roosevelt neighborhood is diverse, and land use ranges from single-family residential to light industrial. There are concentrations of old and new housing units with styles ranging from 100-year-old single family homes to modern apartment complexes. Roosevelt is nearly at the center of Bellingham. Interurban trail access points are abundant, making it walking distance to Barkley Village and the plaza on James Street, and a short bike ride or drive to anywhere else in Bellingham.

The Whatcom Creek corridor, which forms the southern boundary of the neighborhood, and the 9-acre Roosevelt Neighborhood Park are also significant attributes of the Roosevelt Neighborhood. Roosevelt Park is a neighborhood activity center adjacent to the Boys and Girls Club and includes a playground, picnic area, basketball court and loop trail.



Alabama Hill

Single Family Units: 1,162
Multifamily Units: 62
Total Population: 2,941

Roosevelt Elementary School
Kulshan Middle School
Squalicum / Bellingham High School

Sunnyland

Single Family Units: 917
Multifamily Units: 140
Total Population: 2,455

Sunnyland Elementary School
Whatcom Middle School
Bellingham High School

Hosting 2,200 Bellingham residents, the Sunnyland neighborhood boasts multifamily and single-family areas surrounding a neighborhood commercial area at the Alabama/James Street intersection. The residential character of this neighborhood is generally one of single family two-story charming older homes, with many families having lived there for a number of years.

The neighborhood includes open space and play fields at the reconstructed Bellingham High School, Sunnyland Park, Sunnyland Elementary School and adjacent Memorial Park.

With easy access to downtown Bellingham, this area provides both the comfort of a neighborhood with the convenience of the business district offerings.



Alabama Hill is predominantly a residential neighborhood with single-family houses built during the 1960's and 1970's. The homes in the neighborhood are strongly influenced by contemporary design and oriented toward views of the bay and city. Broad, curved streets, cul-de-sacs, limited access to arterial streets, and larger lots are common features in the neighborhood.

Whatcom Falls Park at the south end of Alabama Hill provides a wide range of active recreation opportunities in this neighborhood. St. Clair Park and Highland Heights Park are neighborhood parks with recreation facilities primarily for grade school children. The Railroad Trail provides a multi-use trail and greenway corridor with a safe overpass of Alabama Street and connection to Whatcom Creek Trail.

Lettered Streets

Single Family Units: 586
Multifamily Units: 902
Total Population: 3,287

Parkview Elementary School
Whatcom Middle School
Bellingham High School

Forming the first neighborhood in Bellingham, the Lettered Streets were built on bluffs overlooking the mudflats of Bellingham Bay and along the northern shore of Whatcom Creek. Constructed for the most part in the late 1890's and early 1900's, the neighborhood was established adjacent to the city's downtown district. Today, the neighborhood includes a mix of single family homes, small apartment buildings, offices in older homes and new buildings, small parks and the Whatcom Middle School/Battersby Field complex.

Maritime Heritage Park, located on Whatcom Creek, defines the southern boundary of the neighborhood and is a popular multi-use park, fish-hatchery, and educational facility.



Silver Beach

Single Family Units: 1,141
Multifamily Units: 272
Total Population: 3,445

Silver Beach Elementary School
Kulshan / Whatcom Middle School
Squalicum / Bellingham High School

Referred to as the “sunny side of Lake Whatcom,” the Silver Beach neighborhood has a unique setting. Platted into small lots and developed many years ago, this has resulted in a wide variety of ages and styles of homes here. The miles of shoreline provide beautiful views and tremendous recreational opportunities. In this neighborhood you will find the 20-acre Bloedel Donovan Park, one of the most popular parks in the city. The park provides boating access to the lake, swimming area, playground, basketball and volleyball courts, an open playfield, a multi-purpose building with gymnasium and meeting rooms, a smaller building for meetings and classes, and a pre-school.

Columbia

Single Family Units: 1,556
Multifamily Units: 229
Total Population: 4,263

Columbia Elementary School
Shuksan Middle School
Bellingham High School

One of the city’s oldest neighborhoods, Columbia is a wonderful place to call home for nearly 4,000 Bellingham residents. The overwhelming majority of the approximately 1,600 residential structures within this neighborhood are single family. The southernmost portion of the neighborhood, identified as the Eldridge Historical District, contains many large, historically significant homes.

Columbia Neighborhood residents enjoy the use of Elizabeth Park, which is viewed as a valued community asset. Other parks within the neighborhood include Carl Lobe and Lorraine Ellis Parks with facilities for younger children and families. Squalicum Creek Greenway forms the northwestern border of the neighborhood and there is easy access to Squalicum Creek Park, in the adjacent Birchwood Neighborhood.



Bellingham population is growing **1.13% annually.**



Birchwood

Single Family Units: 1,102
Multifamily Units: 1,587
Total Population: 5,543

Birchwood Elementary School
Shuksan Middle School
Bellingham / Squalicum High School

The Birchwood neighborhood contains large lots, mature landscaping, and narrow streets, which lend a rural atmosphere to the neighborhood. In addition to the single-family residences in this neighborhood, you will also find apartments and a commercial area.

The Bellingham Golf and Country Club, the Squalicum Creek Greenbelt, Bellingham Technical College and Shuksan Middle School are all located nearby.

Birchwood Park provides neighborhood amenities including a playground, basketball court, picnic shelter and open play field. Shuksan Meadows, adjacent to Shuksan Middle School, provides a playground and half-court basketball. Squalicum Creek Park is a new addition to the neighborhood. The master plan for this 42-acre park includes lighted ball fields, multi-use fields, playgrounds, picnic shelters, enclosed pavilion building and an off-leash dog park.



Cornwall

Single Family Units: 859 Parkview Elementary School
Multifamily Units: 102 Whatcom Middle School
Total Population: 2,505 Bellingham High School

The neighborhood derives much of its character and charm from the diversity of its recreation areas, open space and large, older homes. These well-maintained homes with large lawns give the neighborhood a pleasant, quiet, residential atmosphere. With convenient access to the freeway, and to downtown and outlying commercial areas, a major regional park, Cornwall retains a stable, pleasant residential character.

Parkview Elementary School is another neighborhood asset, as is the Bay to Baker Trail and Greenway that will extend through the northern part of the neighborhood. The 70-acre Cornwall Park in the center of the neighborhood provides a wealth of recreation opportunities for this and adjacent neighborhoods. The Cornwall Park Neighborhood is also home to St. Joseph Hospital, an important regional medical facility and one of the area's largest employers.

In 1909, Cornwall Park was named in honor of Pierre Barlow Cornwall. Cornwall was a businessman and philanthropist. Originally from New York and traveling to California in 1848, he began to open businesses along the west coast, including Bellingham.

Barkley

Single Family Units: 1,093
Multifamily Units: 1,354
Total Population: 4,982

Northern Heights Elementary School
Shuksan Middle School
Squalicum High School

The Barkley Neighborhood contains 814 acres located primarily south of Sunset Drive and north of the Roosevelt and Alabama Hill Neighborhoods. It has a mix of land uses, including a regional scale commercial development. The focal point of the neighborhood, however, is the Barkley Urban Village development. This development is one of the first urban villages to be built in the city. It includes a mix of industrial, retail, professional offices and residential development. Barkley Boulevard is flanked by new homes with expansive city and bay views as it winds up Alabama Hill. The existing character of the neighborhood, as well as the presence of open space areas, trails and view corridors continue to be valued by neighborhood residents. Careful consideration in developing zoning designations and in reviewing projects for zoning compliance should continue to emphasize and preserve these characteristics.



Irongate

Single Family Units: 8
Multifamily Units: 0
Total Population: 121

Since 2010, Irongate has grown into a primarily industrial neighborhood serving the city and wider county. 800 of its 900 acres is dedicated to industrial work, and the rest is a mix of commercial and residential. Irongate is a major employment center of Bellingham and many of its employees choose to live in the neighborhood or Barkley.

Each residential area within Irongate has its own unique charm and character. The residents in James St. Estates go all out every Christmas with detailed and tasteful lights displays that draws the entire city in to take a look. Fruitland drive is a wonderful place to raise a family as many residents have young

Northern Heights Elementary School
Whatcom / Shuksan Middle School
Squalicum High School

children of their own. The public schools nearby are strong due to the investment of the community. The usual school track goes from Northern Heights Elementary to Shuksan Middle to Squalicum High.

There are parks and walking trails spread throughout the neighborhood. On the south side lies Sunset Pond and Squalicum Creek, and the Northern Heights playground provides endless fun for the local children. The Sunset Pond has amazing walking trails for dogs and bikers and it leads straight to Cornwall park. Additionally, Irongate is situated between three major shopping areas: Sunset Square, Barkley Village, and Bellis Fair Mall. Every errand can be completed with a short drive, fitting perfectly with every shopping need.



King Mountain

Single Family Units: 751
Multifamily Units: 495
Total Population: 2,875

Cordata Elementary School
Whatcom Middle School
Squalicum High School

King Mountain has been predicted to grow at an unprecedented rate within the next ten years. The area is made up of residential zones and commercial areas that serve the wider community. Businesses include agricultural nurseries, storage units, tree farms, and professional office buildings.

King Mountain contains homes with a variety of styles, sizes, and prices. There are single family homes scattered on large lots that provide privacy and space, or mobile home lots that are more affordable and closer to parks. It is home to many creeks and wildlife parks, including Baker, Silver, and Squalicum creek. The neighborhood provides privacy for its residents while maintaining a connection to the shopping and convenience of the city. For families with children, the wooded nature of King Mountain is a wonderful place to play and explore, and the nearby schools are all strongly supported by the community. The usual school track follows Parkview Elementary to Shuksan Middle to Squalicum High, with options for private school.



Meridian

| | |
|--------------------------|---------------------------------|
| Single Family Units: 216 | Cordata Elementary School |
| Multifamily Units: 1,716 | Whatcom / Shuksan Middle School |
| Total Population: 4,526 | Squalicum High School |

Meridian has been zoned for commercial, industrial, and residential use; in recent years the industrial areas have surrendered to the demand for more commercial space. Residents are spread throughout the remaining area in a mix of single family homes and modern apartment buildings. In recent planning with the city, it has been discovered that Meridian has even more potential for growth without infringing on residential areas. As a result, the Bellis Fair retail area could become another Urban Village similar to Barkley Village.

Whatcom Community College lies just west of Meridian, and many students choose to reside in the neighborhood as they pursue their studies. Residents of Meridian enjoy the convenience of shopping opportunities, and many only travel a short distance to complete their errands.

Those employed in the area also enjoy a short commute if they choose to make Meridian their home. With carefully planned streets, landscaping, and well maintained houses, this neighborhood is a comfortable place to live.

Cordata

| | |
|----------------------------|---------------------------|
| Single Family Units: 1,185 | Cordata Elementary School |
| Multifamily Units: 2,302 | Shuksan Middle School |
| Total Population: 7,074 | Squalicum High School |

The Cordata Neighborhood was formed in 2010. This neighborhood is comprised of single-family residences, condos, 55+ communities, apartments & commercial spaces, and is where you will find Whatcom Community College. This is one of the few areas in town where you will find a large number of new homes being built. The neighborhood also features an expansive new park with trails, play structures and a bike pump track.



Restaurants

Carnal

Wood-fired establishment specializing in slow-cooked meat and the seasonal produce and aquaculture of the Pacific Northwest. Head inside by the fireplace or outside on the garden patio during the warm months.

Black Sheep

With a mission to serve Margaritas, Palomas and original cocktails, it's now one of the largest and most esoteric selections of agave spirits in Bellingham. Have specialty drinks with tasty tacos and a mix of jazzed up bar snacks.

Rock & Rye Oyster House

Seasonally-rotating selection of food and drinks with products sourced from local shellfish farmers, fishermen, farmers, brewers, and distillers. Some of their offerings may lean fine dining, but they strive to create a casual environment.



Wanida Thai Cuisine

Serves classic Thai dishes with generous portions and a twist of spice. Enjoy the calm environment of the Lettered Streets neighborhood while eating a warm serving of Pad Thai, Panang Curry, Basil Fried Rice and more.

Storia Cucina

Storia Cucina brings an affordable, quality Italian dining experience to the community. Their ingredients are locally sourced and makes up their menu of comfort food, consisting of rich tomato soup, meatballs, focaccia, generous one-size pizzas and cool pastas like pappardelle Bolognese, squid ink gnocchetti and lumache pomodoro. Stop by during happy hour to see what they offer!

Bantam

Bantam Kitchen & Bar serves Rotisserie Chicken, Fried Chicken, Southern Style Sides and Cocktails. Bantam is family-friendly downstairs, 21 and over upstairs.



Milano's

Italian restaurant offering a fine dining experience reminiscent of Italy with a curated menu of pastas, meats, seafood, cocktails and wine. With an authentic and cozy atmosphere, Milano's is waiting for you in downtown Fairhaven!

The Black Cat

The Black Cat is located on the 3rd floor of the old-world Sycamore Square building and offers a warm and welcoming charm, showcasing views of Fairhaven & Bellingham Bay. Classic American bistro-style menu along with full bar menu. Their social house atmosphere has been an attraction to locals and visitors for decades.

Keenan's at the Pier

Casual yet elegant, Keenan's at the Pier, located in historic Fairhaven features fresh local Northwest cuisine with a creative twist and a full bar. Enjoy a panoramic view of Bellingham Bay and the San Juan Islands while sipping a crafted cocktail or glass of wine from their extensive list. Seasonal outside dining too!

Cafes + Bakeries

Avenue Bread

Avenue Bread is the neighborhood café and bakery that creates community around authentic eats. Proudly serving up fine sandwiches, salads, grinders and much more since 1995, come by to any of their 4 locations in Whatcom County to give it a try!

Pure Bliss

It's open late, with a family friendly environment. Serving wonderfully crafted individual and whole desserts, along with beer, cider and wine on tap. Full espresso bar with pour over coffee. Variety of desserts that are gluten-free, dairy free, &/or vegan.



Makeworth Coffee Roasters

Makeworth Coffee Roasters exists to celebrate craft and connection through specialty coffee roasting, cafe, and event services. Serving tasty coffee, delicious food, curated beer and cider, and mercantile created by in-house and local artists.

Iron Rooster Bakery

The Iron Rooster Bakery is an artisanal kitchen located in the heart of Bellingham's historic Fairhaven District, producing hand-made pastries, croissants, cakes, and French inspired cuisine.

The Birch Door Cafe

The Birch Door Cafe brings to the table three generations of restaurant excellence and expertise. Known for their vast breakfast menu, try their famous Apple Pancakes or perhaps a German Pancake! Very homey environment with excellent service.

Old Town Cafe

Grab a seat at the big community table or wait for a booth or table of your own. Old Town uses as many natural, local, and organic products as possible and makes all its pastries on-site with whole-wheat flour and unrefined sweeteners. You'll find plenty of vegetarian and gluten-free options on the Old Town menu. Local musicians can perform for a free meal in their large dining room, and you'll find locally crafted art gracing the walls, rotating every 2 months.

Lettered Streets Coffeehouse

Quaint, friendly little shop located in the Lettered Streets neighborhood. Coffee is roasted in Bellingham and they frequently work with other local vendors. Serving a variety of pastries with vegan and gluten free options, as well as their seasonal lunch menu created in-house and prepared to order. Swing by to study, have a business meeting, or relax with some friends.

Banter

A creative spot with unique combinations of spices flavors, and textures from all around the globe. You'll find plants, fun proteins, lots of herbs, citrus, pickled things, and crunchy bits on their menus. Stop in to taste their latest creation!

Cafe Rumba

You can get sandwiches anywhere, but the Peruvian-style sanguches at Cafe Rumba come filled with house-roasted pork, yam, rotisserie chicken, and a spread of chimichurri or aji huacatay, a minty Peruvian sauce. Try a plate of fried yucca root and salsa or roasted yams and a refreshing glass of maracuya, a Peruvian passionfruit juice.

Breweries

Bellingham - arguably one of the best craft-brew scenes in the Northwest. Whatcom County has 17 breweries – 14 of which are within Bellingham city limits. Check out the Bellingham Beer Tour created by TapTrail.com to get a full guide map, collect stamps, and trade for rewards!

Aslan Brewing Company

Committed to organic, locally sourced goods and low-impact practices, Aslan aims for the sustainability and the betterment of their community. With a variety of beers on tap and a delicious menu of food, especially their Waffle Fry Poutine, you won't leave Aslan unhappy.

Bellingham Cider Company

Though their rotating cider selection is outstanding, they also offer stellar food, full bar, outdoor seating, water views, and a great location in the same building as the Sylvia Center for the Arts.

Boundary Bay Brewery

Boundary Bay is one of the oldest breweries in town. The brewery has been serving beer and food in the Pacific Northwest since 1995. Boundary Bay is known for stellar beer and food, a rotating art gallery, and live music hosted indoors or out in their beer garden, "Bellingham's Backyard."

Gruff Brewing Company

It's laidback, has a local vibe, and is beautiful on a sunny day or for sunset. The beer, as is the case with virtually every brewery in Bellingham, is very good. Hang out around their fire pits for a chat or order from the Brothers Bus Bistro food truck.

Stone's Throw Brewery

If you like the idea of drinking beer in a 1900s old Washington port city, then check out Stones Throw. Stones Throw has a relaxed atmosphere - Unless you're competing in their weekly Trivia Night! Captures the spirit of sustainability, community, and adventure.

Kulshan Brewing Company

A true neighborhood brewery in Sunnyland, a 30-barrel brewhouse known as K2 in Roosevelt, and a seasonal beer garden called Trackside in the shipping container village at Bellingham's waterfront - Kulshan offers an expansive lineup of Northwest style ales and lagers!



Twin Sisters Brewing

Twin Sisters has the biggest open-air beer garden in town! Head inside the restaurant and take in the soaring architecture, one of a kind artwork, and floor to ceiling windows. It's the perfect spot for the family or to meet up with friends and play lawn games with a cold one. Plus, it's dog-friendly.

Structures Brewing

Out-of-the-box brewery that takes risks to create unique, rich flavors that you can't find in most taprooms. They have their share of IPA options - a requirement in the PNW - but also a number of unique and tasty brews. They keep it simple with intent and style while producing a rocking selection of quality beers!

Honorable Mentions

Schweinhaus Biergarten

Although it's not a brewery, Schwein has great beer to be paired with their wood fired sausages, pretzels, and potato wedges. This open-air beer garden has a portion covered to protect you from the PNW rain, and is a fun spot to root for your favorite sports team or enjoy the live performers they frequently bring in.



Paws For A Beer

Dog lovers - This is for you! Paws For a Beer is Bellingham's first dog-friendly tavern. Here, dogs with memberships are able to roam freely off-leash inside and outside the premises while their owners and the general 21+ public sip on refreshing beverages.

Golf Courses

North Bellingham Golf Course

18-hole, Par 72 course with flowering meadows and gently rolling fairways. Golfers will enjoy the panoramic views of Mt. Baker while being challenged by the prevailing gale winds sweeping across the landscape. Enjoyable layout for all skill levels.

Shuksan Golf

Explore Shuksan's 6,737 yard course that varies over 100 feet in elevation combining breathtaking views with challenge and variety for golfers of all abilities.

Lake Padden Golf Course

Lake Padden is a beautiful 18 hole golf course carved out of a second growth forest. A full service facility offering complete practice facilities, golf lessons, snack bar with big screen TV, and club rentals.

Semiahmoo Golf & Country Club

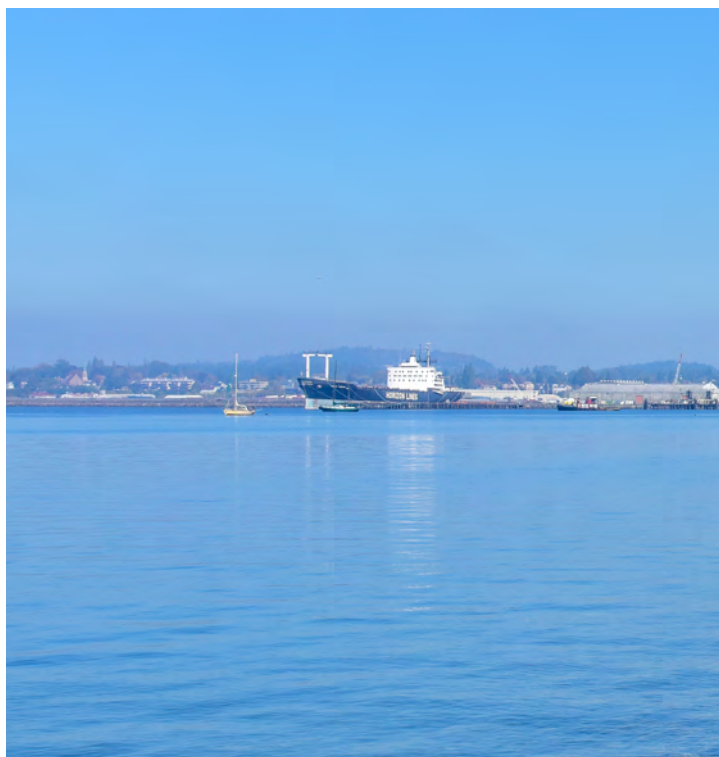
Open year-round, its golf challenges include water in play on five holes and 67 strategically placed bunkers. The fairways are rolling and generous, with fast and challenging greens. Tee box placements at the course adjust the degree of difficulty to make the course playable for golfers of all skill levels.

Loomis Trail Golf Club

Loomis Trail represents 18 holes of the 36-hole facility found at the Semiahmoo Resort in Blaine. Loomis requires your attention throughout the round since water is found on every hole. The course is engulfed by trees on the perimeter, but the mature evergreens are thinned out through most of the interior portions of the course to increase playability for patrons.

Sudden Valley Golf Course

The front nine is relatively open and flat and borders the shores of Lake Whatcom. Back nine follows a ridge uphill with narrow evergreen-fringed fairways and smaller greens that have more character. Finesse and accuracy are required with water hazards on fourteen of the eighteen holes and some forty-seven bunkers sprinkled throughout the course.



Bellingham Golf & Country Club

Located between I-5 to the north and Birchwood Avenue to the south, this is a private facility offering the ultimate experience in golf, dining, swimming, and relaxation. The Par 72 course features fairways lined with huge trees, outstanding bunker placement, lush rough and impeccably manicured greens, making it a challenging, yet enjoyable course for players of all levels.

Homestead Farms Golf Course

On the outskirts of Lynden, this course winds its way across what was once fertile dairy land. This is a true resort course, with wide landing areas and multiple tees for the recreational golfer and length, doglegs and hidden hazards to challenge players with some game. And it is the only course in Washington with a par five that plays into an island green!

Sandy Point Golf Club

Private, 9-hole golf course located in Ferndale. Well-maintained Par 32 course, with several water hazards! The scenic views of Mount Baker and a fresh sea breeze make for a perfect golf outing.

Raspberry Ridge Golf Course

Raspberry Ridge Golf is a 9-Hole, par 34 course located between Bellingham and Lynden. The 5,170 yard course is very well maintained and features a modest pro shop, great restaurant, enormous greens and spectacular views of Mount Baker.



Parks

Boulevard Park

Featured above, this waterfront park near the historic downtown area of Fairhaven features beach access, a boardwalk, a coffee shop, and a children's playground. One of the most popular parks in town!

Lake Padden

Walk, run or bike the 2.5 mile loop around the lake, go for a swim, enjoy the dog park and off-leash trails, take the kids to the playground, play some ball on the large sport fields - this park has something for everyone.

Cordata Park

25-acre park on the north end of town that features an accessible playground, parkour course, and paved pump track. Almost a mile of trails with bridges crossing through the meadows. Splash Pad open June 15 - September 15!

Sehome Hill Arboretum

175 forested acres adjacent to Western Washington University with 6 miles of trails and an observation tower.

Whatcom Falls Park

Follow the paved path on a light walk or head into the forest trails and you're bound to see the falls. With several miles of well-maintained walking trails, you can connect to Bloedel Donovan Park, the Railroad Trail, or do a one-mile loop in the park by beginning in the Silver Beach Road parking area.

LOOKING FOR MORE?

Scan the QR Code to visit our Useful Links webpage and get information on School Districts / Education, Transportation and Chambers of Commerce. Plus, additional County + individual city information.



windermerewhatcom.com/useful-links



Stay up to date on road conditions and travel times with the WSDOT app and plan your next outdoor adventure in Whatcom County with the AllTrails app!

Annual Events

Festival of Music

January

Bellingham Festival Orchestra brings together principal players from major American and European orchestras and exceptional musicians from regional and national ensembles to present concerts of classical music at the highest caliber of artistic excellence.



Cultural Arts Festival

March

Seeks to celebrate the various diverse cultures that populate our great area. People of all backgrounds are invited to show off what makes their culture unique through fine art, craft, food, song, dance, storytelling, and any other creative endeavor.

Wings Over Water

March

Birding Festival in Blaine celebrates the incredible variety of migratory birds, which flock to Drayton Harbor and Semiahmoo Bay each winter and spring. Visit the festival for a day-long birding expo with free activities for the whole family, including wildlife demonstrations, bird viewing stations, exhibits, displays, craft vendors, and more.

Home & Garden Show

April

The largest home show north of Seattle and it's in Lynden! Come see the biggest and best display of products for your home and garden in Northwest Washington. With over 200 vendors there is something for everyone.

April Brews Day

April

Join local and regional brewers as they share their micro-brews for a fundraising event benefiting the Max Higbee Center, a nonprofit agency that provides recreational opportunities for teens and adults with developmental disabilities. Admission includes a collectible tasting glass and tickets for tasting beer. Local musicians are featured, as well as food from some of Bellingham's finest food trucks.

Ski to Sea

May

Ski to Sea is the original multisport relay race, from Mt. Baker to Bellingham Bay and the largest annual event in Bellingham/Whatcom County. The race is 93 miles, has 7 legs and 15 divisions are offered. Organize your team of 3-8 racers and join us on Memorial Day weekend! Teammates and spectators await finishing racers in Bellingham's scenic Marine Park.

Deming Log Show

June

You won't want to miss out on this display of talent and strength from local loggers. Come early and stay late as they present 31 events and exhibitions demonstrating their unique skills. Check out the equipment display, get a bite to eat, and don't miss axe throwing, speed climbing, log rolling, chainsaw bucking, and the ironman.



Padden Triathlon

June

An excellent first, second, or twenty-second triathlon. Short Course and Long Course available with relay teams welcome. Athena and Clydesdale divisions are offered. Registration is capped at 325 entrants per race.

Downtown Sounds

July

Downtown Sounds is a series of free outdoor concerts for the entire family to enjoy. The event is celebrated in the Arts District of Bellingham, on the 1300 block of Bay Street. Held on Wednesdays, each night features performances from popular bands and music from various genres, local food vendors, and a 21+ beverage garden.



Northwest Washington Fair

August

Six-day event located in Lynden, WA. Highlights include local ice cream by the Whatcom County Dairy Women, draft horse competitions, livestock judging, food and craft displays, a demolition derby, and nightly entertainment in the grandstands.

Seafest

September

SeaFeast is a celebration of Bellingham's maritime heritage legacy, bustling working waterfront, internationally renowned fishing and seafood industries, unsurpassed culinary bounty, and our finest regional entertainment. The waterfront has defined Bellingham from its very beginnings, and this two-day festival shows from sea-to-plate why the ocean, the bay, and the Salish Sea set Bellingham apart.

Bellingham Marathon

September

Featuring views of Bellingham Bay, San Juan Islands, and North Cascades mountains, it is one of the most beautiful road races in the Pacific Northwest. Join for the 5K and 10K, or take on the challenge of the Half and Full Marathons.

Holiday Port Festival

December

Annually the first weekend in December and takes place at the Bellingham Cruise Terminal in the historic Fairhaven district. Features performances by local choirs, orchestras, bands, and dance groups. There are free family activities, including horse-drawn wagon rides, children's art activities, complimentary gingerbread cookies and cider, just to name a few. Santa and Mrs. Claus will be there as well. Meanwhile, sugar plum fairies transform the Bellingham Cruise Terminal into a sweet gingerbread house contest. Categories range from youth to professional bakers.





Moving Out of the Area

Windermere's relocation network connects me to knowledgeable agents worldwide. And since so much of real estate is based on relationships, I'm able to pull together resources that will facilitate your relocation.

MY EXTENSIVE PROFESSIONAL NETWORK

- › I can refer you to Windermere associates in several Western states who share my philosophy of quality customer service.
- › Through my professional memberships in the real estate industry, I can refer you to a qualified real estate practitioner with specialized training.
- › In addition, I have a broad range of business connections in real-estate-related as well as non-real-estate-related industries.

WINDERMERE RELOCATION SERVICES

- › Our relocation network combines an understanding of relocation and real estate with the most current industry insights, to design a relocation program tailored for you.
- › Windermere's relocation management offers services to fit your specific needs, whether you are moving due to a corporate relocation, family needs or change of lifestyle.
- › Services can include providing community and practical information about your destination area, relocation guides and, if needed, temporary housing arrangements.



Ben Tucker

REAL ESTATE BROKER

bentucker@windermere.com
360-393-5726
bellinghamben.com

I'm passionate about my work and the level of service I provide, and I'd love the opportunity to share that excitement with you!

MY MISSION

To bring others joy and fulfillment through humor, love, and diligent work.

ABOUT ME

I pride myself on providing integrity, hard work, a sense of humor and a creative approach in every aspect of my life. Over the course of the last fifteen years I've had the opportunity to learn and grow as a professional and to develop the communication skills that I believe are the cornerstone of a great buying or selling experience. I strive to provide my clients with a professional, fun, well-articulated transaction, and I look forward to doing the same for you!

The next time you need a Realtor, whether you're buying or selling, I'd love the opportunity to have a conversation with you. I'm passionate about my work and the level of service I provide, and I'd love the opportunity to share that excitement with you!



If you are working with an agent, this is not meant as a solicitation for that business.



Visit us at www.windermerewhatcom.com

ALL IN, FOR YOU.

Experience the Windermere difference

When it comes to professional real estate services, Windermere sets the standard.

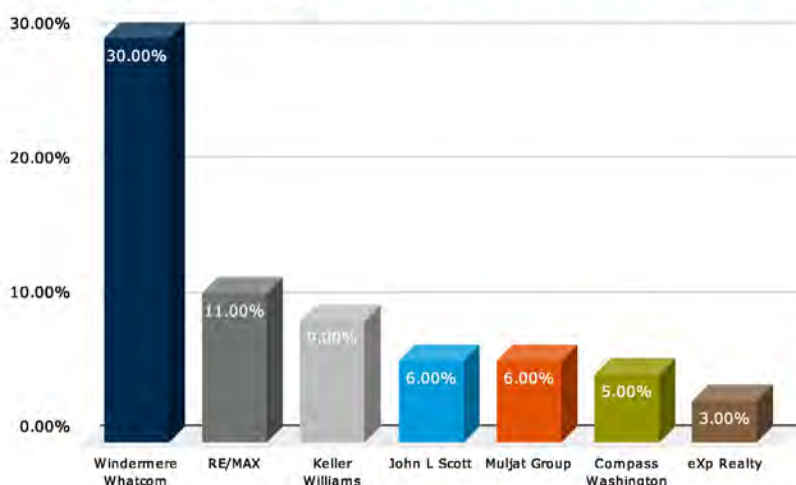
Windermere Whatcom, Inc. is part of more than 350 offices throughout the West. Our full-time professional agents provide you with local expertise and the strength of a leading independent residential real estate network throughout the western United States.

Statistics show Windermere as the leading Real Estate company in Western Washington with over 23 counties combined. Our agents remain at the top in their field and are empowered with high-caliber marketing and technology tools. Our internet, public, agent, and print marketing helps expose your listing to the largest audience of serious buyers and keeps us on the cutting edge in effectively facilitating you through your real estate transactions.

Above all, Windermere associates are committed to the communities we serve. We dedicate our time and resources to improving Whatcom County through our annual Community Service Day and the Windermere Foundation, which provides funding to support low-income families and those experiencing homelessness.

Whether you're looking to buy your first home, a move-up property, a vacation retreat, investment property or a luxury estate, call us to find out about Windermere's unique program, and how it can work for you.

Windermere Holds Largest Market Share in Whatcom County



OUR OFFICES

Bellingham
515 W Bakerview Rd, Bellingham
360-734-7500

Fairhaven
1200 Old Fairhaven Pkwy #106, Bellingham
360-671-5000

Ferndale
1894 Main St #102, Ferndale
360-398-6800

Birch Bay/Blaine
8105 Birch Bay Square St #101, Blaine
360-371-5100

Lynden
8071 Guide Meridian #105, Lynden
360-354-4455

Property Management
541 W Bakerview Rd, Bellingham
360-733-7944


Windermere
REAL ESTATE

WINDERMERE REAL ESTATE / WHATCOM, INC.